



# DESERT ADAPT

PREPARING DESERTIFICATION AREAS FOR INCREASING CLIMATE CHANGE

## NEWSLETTER

LIFE16 CCA/IT/000011

| Issue 26 | Date: April 30<sup>th</sup> 2022

## D1 PROJECT ACTION: Monitor and measure Life key indicators

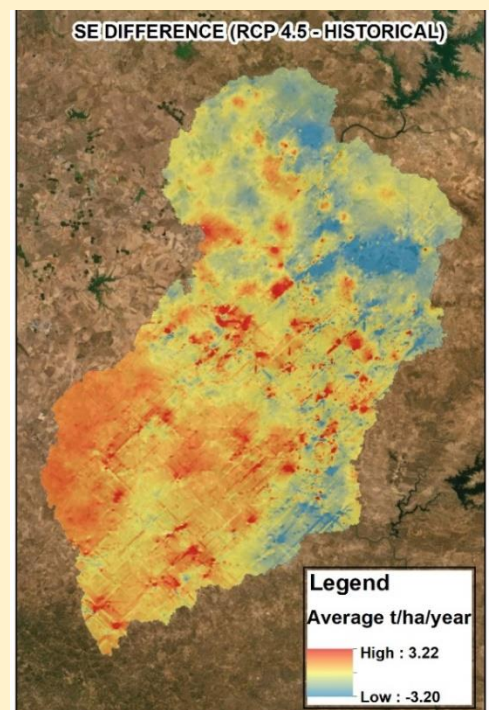
A key action of the LIFE project is to monitor the improvement of environmental, social, economic conditions induced by the project actions in the pilot sites.

*The action D1 is about monitoring the environmental indicators related to soil quality, hydrogeology, biodiversity, climate mitigation by C sequestration in permanent plants biomass and soil, land degradation trend inversion and increase of land productivity*

The technical teams of the Universities of *Campania, Palermo, Extremadura, Lisbon* are in charge of monitoring, data analysis and interpretation. Sampling campaigns will intensify this May 2022! Stay tuned for our results! And if you are interested to get involved write us!

We will also evaluate land improvement using a *modelling* approach to simulate what will happen in the future years for variables that are very slow to change and/or complex to analyse but are also very important, like C accumulation in soil and plant biomass or soil erosion.

Here is an example for the project area in Portugal on how to calculate and represent the change in soil erosion (SE) rates that will occur in the next 20 years, with the present land management. In red are the most important hotspots of increased erosion risk. In these areas farmers might take particular care to adopt the right land management thanks to this provided information. For example they might reduce grazing pressure, ensure always a cover of grass, avoid fire, increase afforestation, reduce soil tillage to minimum or zero, adopt keylines, all adaptation measures proposed by the Desert-Adapt project to its farmers.



### CONTACTS

[simona.castaldi@unicampania.it](mailto:simona.castaldi@unicampania.it) (EN)

[paola.quatrini@unipa.it](mailto:paola.quatrini@unipa.it) (IT)

[nando@unex.es](mailto:nando@unex.es) (SP)

[ambiente@adpm.pt](mailto:ambiente@adpm.pt) (PT)

### STAY CONNECTED

VISIT OUR WEBPAGE [WWW.DESERT-ADAPT.IT](http://WWW.DESERT-ADAPT.IT)

Follow us on Facebook **LIFE Desert-Adapt**



# OPEN DAYS at pilot areas in Italy and Portugal

On April 26<sup>th</sup> 2022 an open day was held in the site L4 CSL - CONSORZIO SICILIANO LEGALLINEFELICI (IT). The landowner, Michele Russo, presented his farm managed according to the permaculture principles. He explained to local landowners how to create a Desertification Adaptation Model (DAM) and showed the benefits derived from the adoption of specific measures to improve soil quality, biodiversity, combating desertification processes and creating incomes.



On March 5<sup>th</sup> 2022, the Desertification Adaptation Model of the Biological Park of Cabeça Gorda (L8) was presented to local community. The morning was dedicated to visiting the pilot area, taking the opportunity to show the best practices implemented. The afternoon was reserved for activities with younger people, learning, among games, about the importance of biodiversity, water, and adaptation to climate change.



## ANNOUNCEMENTS

Desert-Adapt joint monitoring and steering meeting Sicily, Palermo and Caltagirone May 11-13, 2022

