

DESERT ADAPT

PREPARING DESERTIFICATION AREAS FOR INCREASING CLIMATE CHANGE

NEWSLETTER

LIFE16 CCA/IT/000011

| Issue 27 | Date: June 30th 2022

OPEN DAYS at pilot areas in Spain

On May 21st 2022, an open day was held in the Monteviejo de Moraleja property, partner L7. In such site the dehesa system was implemented and a pioneer agrosilvopastoral project was started. Specifically, a new pistachio plantation (10ha) was created for organic certification: interrows are organically fertilized and sown with fodder grasses that will be periodically harvested/grazed, thus keeping the soil covered increasing organic matter and hence soil fertility.



On June 2nd 2022, the Desertification Adaptation Model of the municipality of Hoyos (SP) was presented to local community. Alternative income opportunities from the agroforestry sector and best practices implemented to reduce fire risk were shown.

On June 10th 2022 an open day was held in the site L6 Valverde del Fresno (SP). The Desertification Adaptation Model (DAM) was explained to local farmers by of University of Extremadura (UNEX) partner, with special reference to the firewall crops adapted to reduce the high fire risk of the area.



CONTACTS

simona.castaldi@unicampania.it (EN)

paola.quatrini@unipa.it (IT)

nando@unex.es (SP)

ambiente@adpm.pt (PT)

STAY CONNECTED

VISIT OUR WEBPAGE WWW.DESERT-ADAPT.IT

Follow us on Facebook **LIFE Desert-Adapt**

Workshop: "Desertification - Dimension and effects of a growing problem in Alentejo "



To celebrate the 30th anniversary of the LIFE program, Serpa Municipality and ADPM, as partners in LIFE Desert-Adapt, organized the Workshop on desertification in Alentejo held on May 10, at the Cante Museum auditorium, in Serpa. It was the first of several workshops on a broader theme: "Desertification and Public Policies in Baixo Alentejo – local solutions to a global problem". These workshops aim to produce a document with shared policy proposals, to be presented to the European Union.



11-12-13 May 2022 7th Desert-Adapt Steering committee meeting and joint visit of CINEA at Palermo University



Steering group of the project along with Cinea LIFE officer Claudia Guerrini and Neemo monitor Lorenzo Mengali spent three days working and discussing together at Palazzo Steri of University of Palermo.



The CINEA visit ended in the Caudarella Farm (L4 CLS) with the landowner Michele Russo.



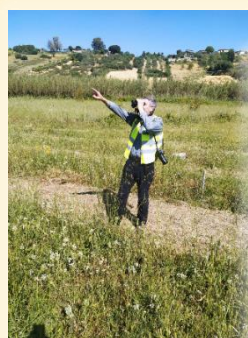
Monitor and measure Life key indicators in L4 CLS site (IT)

On May 13th 2022, during the CINEA visit, the group of the DiSTABiF, University of Campania, in charge of the evaluation of soil ecological, chemical and hydrological properties, and the group of University of Palermo, in charge of soil biodiversity and insects and birds evaluations, sampled and monitored L4 CLS (IT).

Soil team focused on prickly pear orchard to evaluate the benefits derived from the amendment of soil with Opuntia prunings. Soil samples were collected from both tilled and no-tilled areas in order to estimate the effect of soil disturbance too.



The study aims at evaluating the efficiency and the sustainability of this management practice. Soil organic carbon stock will be determined and compared to the references ones, obtained during the baseline sampling 4 years ago, in order to estimate variations and related effects on the overall soil quality.



Monitor and measure Life key indicators in L9 Madeira site (PT)

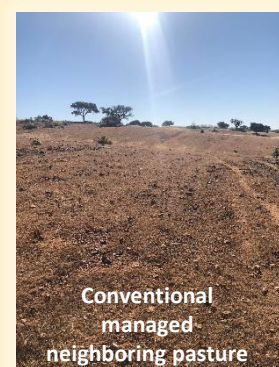
From May 24th to 28th 2022, partners from University of Campania (SUN), University of Palermo (UNIPA) and University of Extremadura (UNEX) sampled and monitored the Portuguese and Spanish sites.

UNIPA, partner in charge for biodiversity, monitored if the improved land management (DAM plans) has incremented the biodiversity and visits of birds, insects, soil fauna, soil microbiota, plant mycorrhization.



The UNEX group coordinated by prof. Fernando Pulido, collected samples to estimate the living vegetation biomass and hence calculate its carbon stock.

The SUN group sampled in Madeira site L9 (PT) to estimate the effect of the adoption of a rotational grazing plan on the overall soil quality. The landowner Joao Madeira is experimenting a more sustainable grazing scheme that leaves always some grass on the ground that protects the soil, reduce land degradation, increase soil C, stimulate biodiversity. Such approach is in contrast to conventional one where overgrazing leaves soil bared.



E4 PROJECT ACTION: Networking

On June 8^o 2022, Prof. Paola Quatrini from University of Palermo, partner in charge of project biodiversity indicators, took part in the «soils, climate, biodiversity: how to adapt to natural cultural and scientific complexity?» webinar to talk about the Desert-Adapt experience.

Suoli, clima, biodiversità:
come adattarsi alla
complessità naturale,
culturale, scientifica?

Webinar | 8 giugno h 10.00



Paola Quatrini
microbiologa
università di Palermo
LIFE DESERT-ADAPT



Dialogano con
Christian Colella
BRIDGES



Enrico Milazzo
Dottorando in Antropologia
Università Ca' Foscari
Collettivo Epidemia



Introduce
Alba L'Astorina
Coordinatrice di
BRIDGES

Fondazione
CARIPLO

SCOPRI DI PIÙ SU PROGETTO-BRIDGES.IT/BUILDING-BRIDGES

