



# DESERT ADAPT

PREPARING DESERTIFICATION AREAS FOR INCREASING CLIMATE CHANGE

## NEWSLETTER

LIFE16 CCA/IT/000011

| Issue 8 | Date: December 31<sup>th</sup> 2018

### MEET THE PARTNERS: UNEX - Universidad De Extremadura (SP)

The Institute for Dehesa of University of Extremadura (SP) is partner of Desert-Adapt



The group: Coordinated by prof. Fernando Pulido, is made of soils scientists, biologists, ecologists, forestry engineers, economists and social scientists who deal with multidisciplinary studies on Mediterranean agro-silvo-pastoral systems (Dehesa) functioning, productivity and sustainability.

### CONTACTS

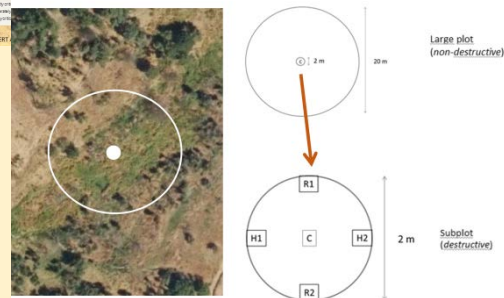
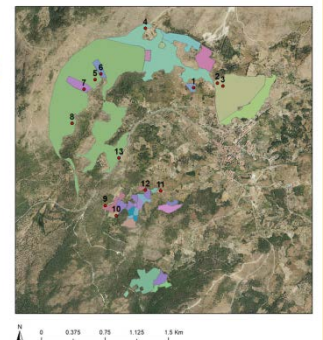
[simona.castaldi@unicampania.it](mailto:simona.castaldi@unicampania.it) (EN)  
[paola.quatrini@unipa.it](mailto:paola.quatrini@unipa.it) (IT)  
[nando@unex.es](mailto:nando@unex.es) (SP)  
[ambiente@adpm.pt](mailto:ambiente@adpm.pt) (PT)

### Training courses «Biomass and carbon» and «Desertification Indicators»

October 24<sup>th</sup> in PT, 26<sup>th</sup> in SP and 29<sup>th</sup> in IT, Fernando Pulido from University of Extremadura and Carlos Machado, FSCH Nova University of Lisbon held courses on biomass and carbon, and desertification indicators. To know more about course content visit our webpage (news)



BIOMASS  
Sampling points  
Hoyos, SP



### STAY CONNECTED

VISIT OUR WEBPAGE

**WWW.DESERT-ADAPT.IT**

Follow us on Facebook

**LIFE Desert-Adapt**



# Training course «Biodiversity, Micorrhizae and Growing Aids»

21 November Portugal, 22-23 November Spain, 26-27 Italy, 2018

LIFE DESERT ADAPT EXPERTS HELD TRAINING COURSES in

- **Biodiversity and agriculture** (Tommaso Lamantia and Rafael da Siveira Bueno, University of Palermo, IT)
- **Biodiversity indicators** (Paola Quatrini and Gabriella Lo Verde from University of Palermo, IT)
- **Micorrhizae** (Paola Quatrini, University of Palermo, IT)
- **Growing aids** (Alice Nunes, Faculdade de Ciencia da Universidade de Lisboa, PT)



Corso aperto su come usare diversi *water aids* per conservare e rendere l'acqua disponibile per le piante



Alice Nunes, Melanie Köbel, Helena Serrano

From FCUL - Faculdade de Ciências da Universidade de Lisboa



University of Palermo, 27th November 2018



## ANNOUNCEMENTS

Desert-Adapt 2<sup>nd</sup> Steering Committee Meeting 26 February 2019 in Plasencia, Spain

### NETWORKING

On 26/27 February 2019 Desert Adapt will visit the projects

- *Montado Adapt* Life project, Casablanca farm (SP) with owner Enrique Vega
- *Agriadapt* Life project, Campete farm (SP) with owner Alfonso García and project coordinator Laura García
- *Mosaico* project, Villasbuenas (SP) with owner Luis Mariano García and project coordinator Fernando Pulido

