



DESERT ADAPT

PREPARING DESERTIFICATION AREAS FOR INCREASING CLIMATE CHANGE

NEWSLETTER

LIFE16 CCA/IT/000011

| Issues 21 | Date: June 30th 2021

DESERT ADAPT MANIFESTO

The Desert-Adapt manifesto states the mission of sustainable public and private landowners under climate change and desertification risk and the key elements that should be included in the land management plan.

THE MISSION OF PUBLIC AND PRIVATE LANDOWNERS



Contribute to the fight against **Climate Change** and **Land Degradation**



Embrace the responsibility to protect your land by using **adaptive strategies** to ensure a **safer planet** for present and future generations.



Seek **long-term land sustainability, economic self-sufficiency and social balance** valorizing **land based solutions and natural capital**



STAY CONNECTED

VISIT OUR WEBPAGE

WWW.DESERT-ADAPT.IT

Follow us on Facebook

LIFE Desert-Adapt





The pillars of adaptive land management strategy



The environmental pillar: protect and enhance ecosystem quality and services

- Protect and support plants and trees in your land
- Increase plant biomass and cover
- Increase soil organic matter
- Reduce soil erosion and loss
- Stimulate biodiversity at all levels
- Reduce fire risk
- Protect quality and quantity of water bodies



The economic pillar: seek long-term self-sustainable economic investments

- Differentiate income sources including bioproducts and ecoservices which valorise your local natural capital
- Prefer local varieties and breeds which are adapted to local climatic conditions and soils
- Focalize the attention on management options that save money whilst increasing land quality
- Avoid agronomic species that are not climate adapted
- Focus on investments which have long term positive effect on your land



The social pillar: be inclusive for the local population

- Contribute to raise awareness and become a testimonial of sustainability with your personal experience
- Make your natural capital a shared good and responsibility



APPLY THE DESERTIFICATION ADAPTATION MODEL FRAMEWORK

The Desertification Adaptation Model (DAM) framework is a procedure which supports landowners to design their own adaptive land management plan. The plan is based on three conceptual pillars and actions of the Desert-Adapt Manifesto. To learn more about the model visit www.desert-adapt.it and contact the coordinator or the local field implementation partners <http://www.desert-adapt.it/index.php/en/>.

DESERT-ADAPT OPEN DAYS WITH SCHOOL 2021

COLLABORATION PROJECT FOR SCHOOLS 2021 FIGHT AGAINST DESERTIFICATION, IMPORTANCE OF ADAPTATION TO CLIMATE CHANGE AND ROLE OF BIODIVERSITY

CLIMATE CHANGE AND DESERTIFICATION



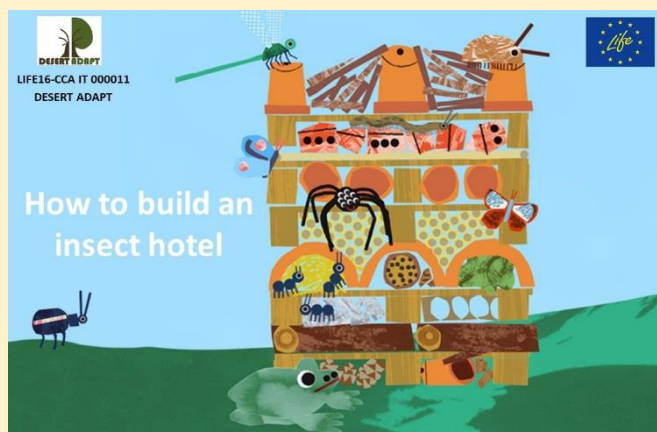
ECOSYSTEM SERVICES



ROLE OF BIODIVERSITY

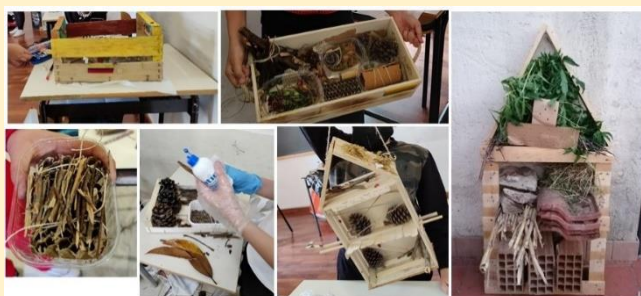


The Project proposes a training activity on climate change, desertification, ecosystem services, key role of biodiversity and sustainability. Practical lessons on how to create your “bug hotel” to support pollinators. **To know more about the project with school visit our webpage** <http://www.desert-adapt.it/index.php/en/home-en-gb/desert-adapt-for-education>, and **apply contacting to regional partners!**



PARTECIPATING SCHOOLS MAY 2021 !

Convitto Nazionale “T. Tasso” di Salerno (IT) and Istituto Comprensivo Medaglie d’Oro di Salerno (IT), 5 classes and 92 students engaged.



Desert-adapt presents DAM plans

The project Desert-Adapt presents the Desertification Adaptation Model (DAM) plans developed by project landowners in their land with the project team, based on landowners activities, interests and potential nature-based solutions of the area. On website you will also find more details about the methodological approach and the guidelines to follow in order to create your sustainable management plan (<http://www.desert-adapt.it/index.php/en/case-studies>).



Call for replication activity

One of the key objective of Desert-Adapt is promoting and replicating the DAM framework among other private and public stakeholders who adhere to project objective. Desert-Adapt offers the technical support to interested private and public landowners to create their own Desertification Adaptation Model as part of the project replication activity.

Make the best management model for your territory to combat desertification and climate change, improve the environmental quality and increase the economic productivity of your lands selecting income opportunities deriving from new combinations of products and ecosystem services and through cooperatively organized promotion, sales and marketing!

Contact:

Project coordinator: Prof. Simona Castaldi, simona.castaldi@unicampania.it

Regional coordinator Italy (Sicily): Prof. Paola Quatrini, paola.quatrini@unipa.it

Regional coordinator Spain (Extremadura): Prof. Fernando Pulido, nando@unex.es

Regional Coordinator Portugal (Alentejo): Felipe Silva, ambiente@adpm.pt

ANNOUNCEMENTS

- July 2nd 2021 - **Inauguration of the pilot area (L9)** of “Sociedade Agrícola Vargas e Madeira” (Corte Gafo, Mértola – PT).
- 30th September 2021 Webinar and streaming **Desert-Adapt event at the preCOP26 ALL4Climate** <http://www.desert-adapt.it/index.php/en/all4climate>.